



Simple. Innovative. Limitless.
Unlock freedom and autonomy with Quantify



Everyone, no matter their age or ability, deserves a good quality of life in their home.

When it comes to smart home automation, you need a solution that meets the needs and improves the health, wellbeing, and daily life activities of every resident – something that is simple to control and easy to understand. Something that enables personalised routines and can adapt with technology and lifestyle changes in the future. Something that gives those who are disabled or aged a sense of liberation, autonomy and independence, yet is secure and affordable.

Quantify's smart home solution is the perfect choice for your development.

Simple

Smart home automation can be difficult to use and understand. You need something simple that just works. Quantify's solution has you covered.

No matter their ability, residents can easily control Quantify's solution via touch, app or voice, allowing a greater sense of independence with everyday tasks.

Quantify's smart switches feature large, accessible LED touch areas that comply with NDIS SDA standards. Residents can even have control when they're not in the room with the qLiving app – anytime, anywhere. Just talk, the room responds. Clients can say; "movie time" or "goodnight", to activate scenes to suit their needs.

Quantify's solution is built to empower everyone.



*NDIS compliant qDimmer
Pinstripe White*

Innovative

Quantify's beautifully designed solution provides more convenience and control, for those less able to look after themselves. Personalised living experiences can control multiple devices at once; for example, a morning routine to turn on lights, open blinds and read reminders, enabling clients to touch less and do more in one go.

Quantify's qDevices can fit any décor or need. Choose Touch Panel artwork – such as; Pinstripe or Modernist iconography, with easily understood sun and moon-symbolled buttons – to suit your requirements.

Residents and staff will feel connected to their home as it responds to their presence through customised and automated behaviours, or as it safeguards their security, providing peace-of-mind when they're home or away.

Limitless

It's not just first impressions that count. It's about what a product can offer in the years to come. Quantify's modular solution is future-proof and built to last – it adapts to suit changing lifestyles and the demands of the modern world.

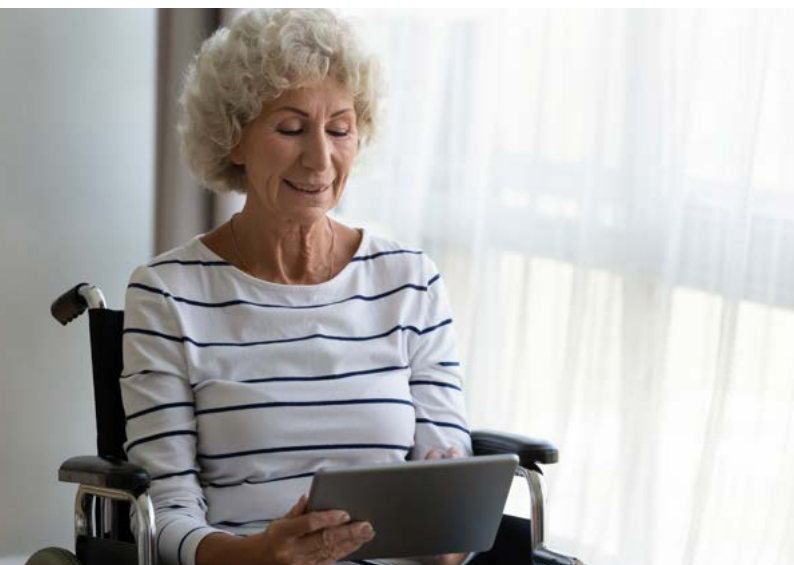
While carers spend more time caring, and less on daily routine tasks, residents can enjoy greater freedom and autonomy. These small increases in productivity, will result in a significant improvement in time spent on primary care each year. To top it off, Quantify's platform can integrate with other assistive technologies, such as facial recognition or CCTV, to enable a more complete solution.

Now, that's not just limitless, it's priceless.

Safe

Quantify's smart home platform can offer a safe and hygienic environment, with touch-less automation via voice or app, to help contain the spread of COVID-19 and other diseases, transferred via touch interfaces.

All qDevices feature smooth glass Touch Panels devoid of physical buttons, meaning they're easy to clean and disinfect. That's three modes of control for your convenience and peace of mind.



*Voice, touch
or app control*



Distributors & Showrooms

Visit our website to find distributors and showrooms nearest to you.



qPower+
Pinstripe White



+61 (0)8 6254 0200

info@quantifytechnology.com

Suite 2, 6 Brodie-Hall Drive, Bentley, Western Australia 6102

www.quantifytechnology.com