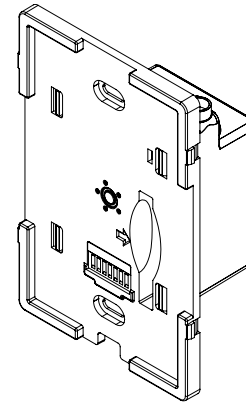


## Specifications

<b>Operating Voltage AC</b>	220-240V		
<b>Frequency</b>	50Hz		
<b>Max. Total Capacity</b>	275W		
<b>Wiring Configuration</b>	Standard wiring	Dedicated neutral	
<b>Minimum Load</b>	Standard wiring	5W	
<b>Output Channels</b>	L1, L2		
<b>Over-current Protection</b>	Yes	Each channel 1x2A fuse and 1x115°C thermal fuse	
<b>Current Monitoring</b>	Yes	Accurate to 5% at 25°C	
<b>Operating Temperature</b>	0°C to 40°C		
<b>Operating Humidity Range</b>	10 to 85% RH		
<b>Mounting Cavity</b>	80mm	54mm	45mm
<b>Mounting Centres</b>	84mm		
<b>IP rating</b>	IP20		
<b>Safety Compliance/ EMC Compliance</b>	IEC 60669-1	IEC 60669-2-1 (Relevant sections)	



## Quantify qBlind Blind Controller PN01-A008-xx

### INSTALLATION GUIDE

## Warranty

### GENERAL WARRANTY ON PRODUCTS

#### LIMITED WARRANTY

Quantify offers a warranty of 24 months (Warranty Term) from the date of delivery of the Quantify products for all defects in materials or workmanship for any products supplied to the Client. Where a product supplied to the Client is defective within the Warranty Term, Quantify will either repair or replace those products at its discretion. Refurbished parts may be used to repair the Products. Replacement of the Product or a part does not extend or restart the Warranty Term. If a Product presented for repair is capable of retaining user-generated data, the Reseller acknowledges that repair of the Product may result in loss of the data. Quantify may offer different delivery methods for warranty service, including, but not limited to, parts and product dispatches, mail-in service and onsite/in-home service or as otherwise agreed between the Client and Quantify in writing. Quantify will cover any costs to get the repaired/tested/replaced Products back to the Client. Any Products being sent in for warranty should be sent with all parts unless otherwise advised by one of Quantify's staff.

#### GENERAL EXCLUSIONS AND LIMITATIONS

The Warranty will not apply:

- to a Product which has not been installed, operated, maintained or used in accordance with the manufacturer's instructions or specifications provided with the Product;
  - to a Product where the factory-applied serial number has been altered or removed;
  - to a Product where the Product is, or has been damaged, has malfunctioned or failed due to alterations, accident, misuse, abuse, fire, liquid spillage, misadjustment of customer controls, used on an incorrect voltage, power surges and dips, thunderstorm activity, acts of God, voltage supply problems, tampering or unauthorised repairs by any persons other than by Quantify, the operation of a computer virus of any kind, exposure to abnormally corrosive conditions or entry by any insect, vermin or foreign object in the Product, normal wear and tear, or use of parts and components not supplied or intended for use with Quantify's Products;
  - to third-party products or software that are bundled or provided with the Services; and
  - in relation to results to be obtained from the products or Software.
- Full terms and conditions including Warranty Terms can be found on Quantify's website.

Technical Specifications for products with future release dates are subject to change and should not be relied upon.

#### Quantify Technology Pty Ltd

Suites 2 & 3, 6 Brodie Hall Drive, Technology Park, Bentley, WA, 6102  
+61 (8) 6254 0200  
info@quantifytechnology.com  
www.quantifytechnology.com

## Product Description

The Quantify Blind Controller works with standard AC cabling techniques and can control two-pole, mains powered blind motors. All electrical, policy and advanced living experience settings are fully configurable using the Quantify software.

## Safety Information

**⚠️ ⚠️ DANGER: Electrical Shock Hazard.** The supply circuit must be turned off, locked and tagged before installing the qBlind, or working on loads connected to a qBlind. Voltage isolation is not provided by the qDevice. Hazardous voltages exist at terminals L1 to L2, even if the device is in "off" state.

**⚠️ WARNING: Do Not Megger Test.** Megger testing will damage the Blind Controller and will void warranty.

## Compatible Load Types

Load Type	Max. load per channel	Notes
Blind motor	275W	

**IMPORTANT:** Don't exceed 275W total load on the device. Overloading may result in it automatically switching off one or more loads.

**IMPORTANT:** Don't connect loads on different phases to the same device.

## Incompatible Load Types

**IMPORTANT:** There should not be another switch between the device and the load.

This device is protected with both a thermal fuse and load fuse on each channel. Overloading the device on any channel will render the channel inoperable and, in instances of severe overload, may render the entire device inoperable.

Loads with a high start-up current (inrush) should be avoided and will cause permanent damage to the device.

## Installation Instructions

**IMPORTANT:** Installation of the qBlind must be carried out by a qualified electrician and in accordance with local authority rules and regulations. The place of installation should ideally be indoors and protected from extremes of temperature and water ingress.

**IMPORTANT:** qBlinds must not be wired in series.

**IMPORTANT:** Strip back 8mm of insulation and terminate tightly under terminating screw. Ensure correct terminals are used.

## Blind Controller Installation

The Blind Controller can be installed into plaster board with a C-Clip or mounted into brick/timber with a standard wall box.

- 1 Screw the Blind Controller firmly to the wall without over-tightening the screws. The top of the screw head must be lower than the plastic.
- 2 Ensure that the screws are electrically isolated and cannot expose users to AC power.

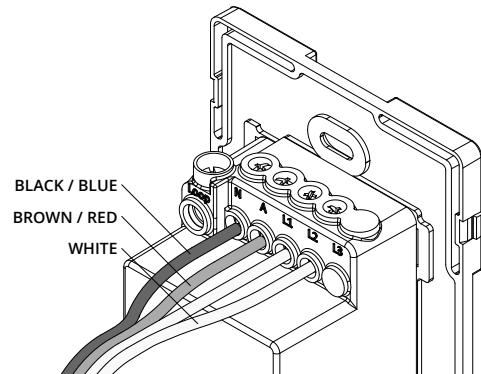
## Wiring Instructions

**⚠ WARNING:** All connected loads must be on the same phase.

**⚠ WARNING:** Device cannot operate in 2-wire mode. A neutral wire is required.

### Standard Wiring (Typical L1-L2)

In the Standard Wiring example (Figure 1), the active and neutral wire are connected to the device as shown. L1-L2 channels are connected to the active input of each attached load. The loads L1-L2 are interlocked, so they cannot both be on at the same time.



**Figure 1: Standard Wiring**  
(Preferred method, typical L1-L2, dedicated neutral)

*Note:* A single permanent active to the Blind Controller is all that is permitted. A single neutral is all that is required.

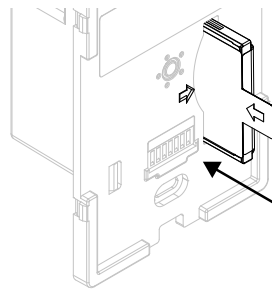
L1: Open motor  
L2: Close motor

## Slide-in Feature Card Installation

**IMPORTANT:** Use only Quantify Technology Feature Cards, inserted with arrows in the correct alignment.

Insert the Feature Card into the slot on the Blind Controller wall panel, as shown in the illustration. Align the arrow on the front of the Blind Controller with the arrow on the Feature Card pull-tab to ensure the correct orientation.

To remove the Feature Card, pull firmly on the protruding tab.



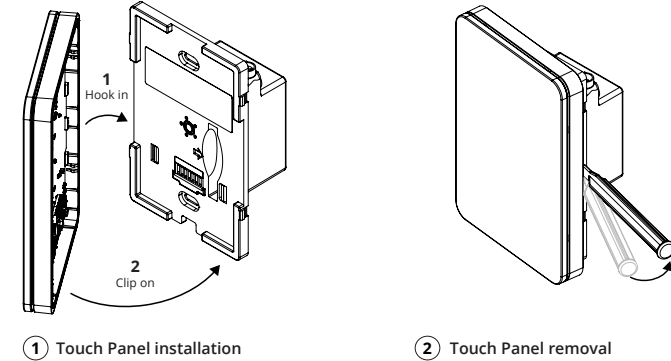
## Clip-on Touch Panel Installation and Removal

**IMPORTANT:** The spring connectors on the Touch Panel must align with the contacts on the Blind Controller wall plate. Attaching the Touch Panel upside down may cause damage to the Touch Panel or Blind Controller.

- ① Align the left side of the Touch Panel with the left side of the Blind Controller wall plate and clip the Touch Panel in position. The LED lights will light up for 2 seconds and the haptic motor will spin up.

**IMPORTANT:** Remove the Touch Panel using a soft plastic pry tool.

- ② Insert the flat end of the tool between wall and the Touch Panel frame on the right hand side and carefully unclip the Panel from the Blind Controller wall frame.



## Setup and Commissioning

**IMPORTANT:** The installed qBlind needs to be commissioned with the qCommission App, available from the Apple App store.

Out of the box, the Blind Controller can switch the L1-L2 on and off. Configuring the Wi-Fi requires the free-to-use qCommission app, available from the Apple App Store.

## Operation Instructions

**IMPORTANT:** A qBlind that is not commissioned can only switch local channels L1-L2.

A commissioned and networked qBlind can control local loads, as well as any remote loads controlled by other qDevices that are part of the same network, as specified in the Living Experience configuration. Living Experiences include single service control, grouped services and scenes. The system can be controlled from the Touch Panels, the qLiving App or by Voice Assistant.

## Additional Help

**IMPORTANT:** We constantly work to improve our products, and document any changes or updates here: [www.quantifytechnology.com/product-documentation](http://www.quantifytechnology.com/product-documentation)



qCommission App

